

Name \_\_\_\_\_

## GCSE Media Studies Production Portfolio

### Your Task

You will produce an extract from a **NEW** magazine aimed at a female audience. This will include:

- The front cover
- A contents page
- A double page spread

You can choose to create:

- A woman's lifestyle magazine (i.e. Vogue, Cosmopolitan, Red)
- A teenage girls' magazine (i.e. Bliss, Shout)
- A lifestyle magazine for young women (i.e. Glamour, InStyle)

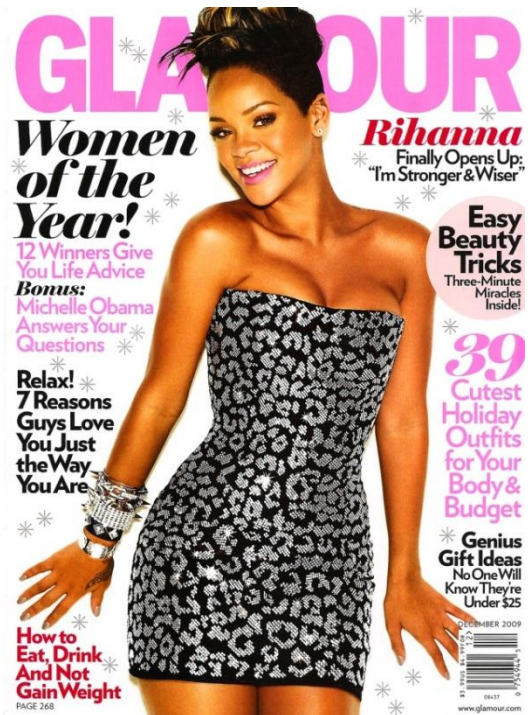
You will be awarded the following marks

Production Log 30 marks

Production 60 marks

Evaluation 30 marks

- You can work in **pairs**. You can work together on the *front cover and contents page* but **each student** must produce their own **Double Page Spread**.
- You must use **some original photography** in your magazine.



Name

## Production Log Evidence

<b>Research into similar magazines.</b> (At least one Front Cover, Contents + DPS from same edition)	
Analysis of two front covers	
Analysis of two contents pages	
Analysis of two double page spreads,	
<b>Research into target audience</b>	
Advertising pack information for a similar magazine (if available)	
Ideal audience profile – age, gender, interests, aspirations, income, fashion/shopping interests, celeb/music artist interests	
Questionnaires/surveys to gain feedback from target audience to help your decision process. Ask questions related to content choice, style, layout etc.	
<b>Front Cover Plan</b>	
Title ideas, font choice, connotations, rejected ideas, reason for final choice linked to audience feedback	
Ideas for straplines, text, language techniques	
Font ideas – try out your title and straplines in different fonts – get audience feedback	
Image ideas – use found images, sketches	
Mock up of front cover to try out layout ideas	
<b>Contents Page Plan</b>	
List of contents	
Mock up of layout	
Images found images/sketches for ideas, own images	
<b>DPS plan</b>	
Research for article	
Draft article + revisions/improvements	
Image ideas – found images/sketches for ideas, own images	
<b>Deadlines/Organisation of time and resources</b>	
Schedule with deadlines showing how you will organise your time/locations/models/resources	
<b>Production Diary</b>	
What you've done each week – you need to make it clear what your individual contribution has been.	

## Assessment

### Level 4 (24–30 marks) Evidence of Excellent...

- research into similar products and a potential target audience.
- organisation of actors, locations, costumes or props.
- work on layouts, drafting, scripting
- time management